



PEGASUS

ASSETS OVERVIEW

Assets Overview



- ❖ The Assets Module is used to manage Plant and Equipment devices, much in the same way that Employees and Contractors are.
- ❖ Enables tracking of service logs, maintenance, equipment serial numbers, asset numbers to name a few.
- ❖ Photos can be uploaded for ease of recognition for workers.
- ❖ Integrated with the Onsite Mobile App to allow visibility and auditing at sites.
- ❖ QR Coded Asset stickers are attached to Assets for ease of recognition and auditing
- ❖ Mobile App Module Integration

- Home
- Manage Roles
- Manage Employees
- Manage Assets**
- Pending Actions
- Logout

Dashboard / Manage Assets / Asset Information / Create Asset

Manage Assets

Select an asset to view its information

Search

ADD NEW ASSET +



Dashboard

People Assets

Asset Profile

Caterpillar 100 kVA Backhoe Loader

ID	A0000000142
Chassis VIN	12345678999...
Location	LL - Mt Piper
Status	Approved

Approved Documents

5	0	0
Current	Expiring	Expired



NAVIGATING ASSETS MODULE

Navigating



From the Manage Assets Menu Item you can:

- ❖ View the Existing Assets
- ❖ Add New Assets
- ❖ Check Status
- ❖ Update Documentation
- ❖ Change Status
- ❖ Return to Homepage

- Home
- Manage Roles
- Manage Employees
- Manage Assets**
- Pending Actions
- Logout

Dashboard / Manage Assets / Asset Information

Manage Assets

Select an asset to view its information

Search

ADD NEW ASSET +

- 3M-Matic 39600 (Wrapping Table)**
Asset #: 12345 | ID: A0000000011
- 600 Engineering Cargofloat (Pantech/Furniture)** >
Engine #: 923742 | ID: A0000000060
- Caterpillar 120G (Grader)** >
Asset #: 123892 | ID: A0000000126
- Caterpillar 120H (Grader)** >
Engine #: 12345 | ID: A0000000162
- Caterpillar 14M (Grader)** >



Asset Information

Information for the selected asset

39600

Type	Wrapping Table
Make	3M-Matic
Asset #	12345
ID	A0000000011
Status	Pending

Asset Details

Current Site TNR2

Update the asset's current site

TNR2

Sites & Documents >

Navigating



Status of Assets in the Portal

- ❖ Traffic Light Colour System
- ❖ “?” Opens the Legend

Dashboard / Manage Assets / Asset Information

Manage Assets

Select an asset to view its information

Search ?

ADD NEW ASSET +

- Caterpillar 143H (Elevating Work Platforms)**
ID: A0000000167 >
- Caterpillar 16H (Motor Graders)**
ID: A0000000128 >
- Caterpillar 248 (Compactor)**
ID: A0000000129 >
- Caterpillar 5110B ME (Dozers)**
ID: A0000000126 >
- Caterpillar 621H (Wheel Loader)**
ID: A0000000125 >
- Caterpillar 651E (Scraper)**
ID: A0000000127 >
- Hitachi EX1200-6 (Excavators <20 Tonne)**
ID: A0000000121 >

Asset key ×

Symbol	Value
	Asset current
	Asset started
	Asset expiring
	Asset expired
	Asset returned or rejected
	Asset submitted

Viewing Existing Assets



Click on the Existing Asset to:

- ❖ View the Existing Assets Details
- ❖ Update Status if Applicable
- ❖ View Photos of Asset
- ❖ Search for Asset Name

Manage Assets

Select an asset to view its information

Search


ADD NEW ASSET +

- Caterpillar 143H (Elevating Work Platforms)**
ID: A0000000167
- Caterpillar 16H (Motor Graders)**
ID: A0000000128
- Caterpillar 248 (Compactor)**
ID: A0000000129
- Caterpillar 5110B ME (Dozers)**
ID: A0000000126
- Caterpillar 621H (Wheel Loader)**
ID: A0000000125
- Caterpillar 651E (Scraper)**
ID: A0000000127
- Hitachi EX1200-6 (Excavators <20 Tonne)**
ID: A0000000121


Asset Information

Information for the selected asset

621H



Compliance Plate



General Condition

Type: **Wheel Loader**
Make: **Caterpillar**
Serial #: **M5G00329**
ID: **A0000000125**
Status: **Submitted**

Asset Details

Current Site: **Mount Piper Power Station**

Sites & Documents >



Viewing Existing Approved Assets



Click on the Approved Asset to:

- ❖ View the Existing Assets Details
- ❖ Update Documents if Necessary
- ❖ View Photos of Asset and relevant Compliance Plates

Dashboard / Manage Assets / Asset Information

Manage Assets

Select an asset to view its information

Search


ADD NEW ASSET +

- Caterpillar 143H (Elevating Work Platforms)**
ID: A0000000167 >
- Caterpillar 16H (Motor Graders)**
ID: A0000000128 >
- Caterpillar 248 (Compactor)**
ID: A0000000129 >
- Caterpillar 5110B ME (Dozers)**
ID: A0000000126 >
- Caterpillar 621H (Wheel Loader)**
ID: A0000000125 >
- Caterpillar 651E (Scraper)**
ID: A0000000127 >
- Hitachi EX1200-6 (Excavators <20 Tonne)**
ID: A0000000121 >


Asset Information

Information for the selected asset

143H



Compliance Plate



General Condition

Type	Elevating Work Platforms
Make	Caterpillar
VIN #	12345678912345678
Serial #	abcdef
ID	A0000000167
Status	Approved
Expiry Date	19/05/2019

Asset Details

Current Site: Mount Piper Power Station

Update the asset's current site

Mount Piper Power Station

Sites & Documents >

Viewing Existing Approved Assets



Click on the Approved Asset, Sites & Documents to:

- ❖ View the Existing Assets Details
- ❖ Update Documents if Necessary
- ❖ Upload new Photos
- ❖ Update Service Records
- ❖ Update Optional Information

Dashboard / Manage Assets / Asset Information / Sites for asset / Documents required

Sites for 143H

Select a site to view this asset's documents requirements

- ✔ Mount Piper Power Station (Current Site)

Back to Asset Information ADD SITE

Expand All | Collapse All

MANDATORY

2/7

- Compliance Plate
- EM Plant used to lift freely suspended loads- Verification of lift rating chart, anti hose burst protection and rated lift point.
- Excavators fitted with Quick Hitches- Supply verification of Fully Auto Hitch
- General Condition Photo
- Plant Inspection Form Completed and Signed
- Risk Assessment - Mobile Plant
- Service Records (last service)

OPTIONAL

0/3

Sites & Documents >



ADDING ASSETS

Adding New Assets



Adding New Asset:

- ❖ Click Add New Asset
- ❖ Enter in Type, Make, Model, (VIN, Serial or Asset #) and Site Location.
- ❖ Click “Can't Find it?” to launch request form for a new type to be created.

Register Asset

Register a new asset and add it to the assets list

Type

Excavators >65 tonne

Make

Hitachi, JBC, CAT, etc

ACO

Model

ZX225USLC, PC88MR, etc

450

Can't find it?

Identifiers

One of VIN or Serial # is required.

VIN #

12345546233526521

Serial #

GVTE33441213

ADD ANOTHER IDENTIFIER

Current Site

Please select the asset's current site

Mount Piper Power Station

CREATE ASSET ✓

CANCEL ✕

Register Asset

Register a new asset and add it to the assets list

Make

Hitachi, JBC, CAT, etc

3M-Matic

510 Brute 6x4

600 Engineering

600 Machine Tools

A H Card

A Noble & Son

A Thomson & Co

Current Site

Please select the asset's current site

CREATE ASSET ✓

CANCEL ✕

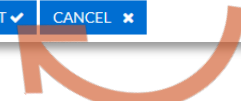
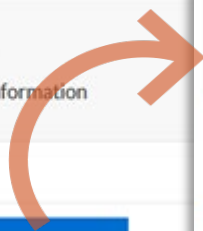
Dashboard / Manage Assets / Asset Information / C

Manage Assets

Select an asset to view its information

Search

ADD NEW ASSET



Adding New Assets



Adding New Asset:

- ❖ Once created, click Sites & Documents to start adding required files
- ❖ Add Site
- ❖ Required Documents items are populated, ready for uploads
- ❖ Once finished, status changes to Submitted

Documents required for 450

- Excavators fitted with Quick Hitches- Supply verification of Fully Auto Hitch
- General Condition Photo
- Plant Inspection Form Completed and Signed
- Risk Assessment - Mobile Plant
- Service Records (last service)

OPTIONAL

0/3

- Articulated Dump Trucks only- Verification of Inclinator integrated with tipping function.
- Lifting Equipment Register
- State Road Registration

Sites for 450

Select a site to view this asset's documents requirements

- Mount Piper Power Station (Current Site)

Back to Asset Information

Asset Information

Information for the selected asset

450

Type Excavators >65 tonne
Make ACO
VIN # 12345546233526521
Serial # GVTE33441213
ID A0000000200
Status Pending
Expiry Date

Asset Details

Current Site Mount Piper Power Station
Update the asset's current site
Mount Piper Power Station

Sites & Documents

Type
Make
VIN #
Serial #
ID
Status

Excavators >65 tonne
ACO
12345546233526521
GVTE33441213
A0000000200
Submitted

Options to Choose

Every Asset Information screen will display the following:

- Model Label
- Compliance Plate Photo and expand document icon: Only displayed If has been uploaded.
- General Condition Photo and expand document icon: Only displayed If has been uploaded.
- Pencil square icon (edit icon): Only displayed for Pending and Returned Assets.
- Type
- Make
- VIN or Serial # and Asset #
- ID
- Status
- Expiry Date: This will be displayed in blank if the Asset has status:
 - Rejected
 - Pending, if the documents haven't been submitted.
- Admin comment: This field only will be displayed if the Asset has status Returned By (only will be displayed if the Asset has status Returned)
- Asset Details:
 - Current Site
 - Update the asset's current site dropdown List
- Site & Documents Tile



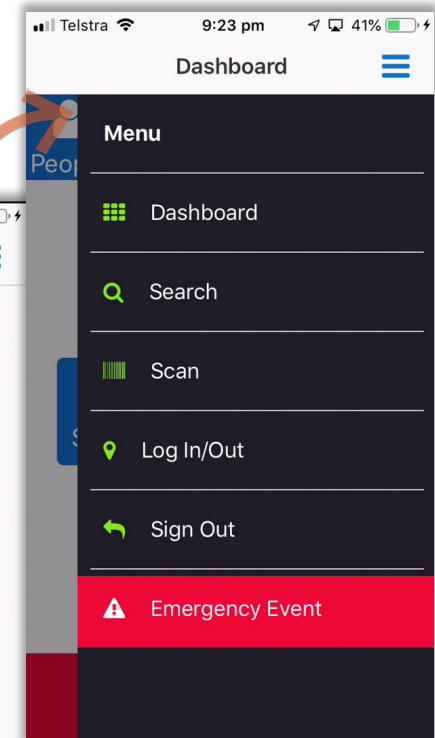
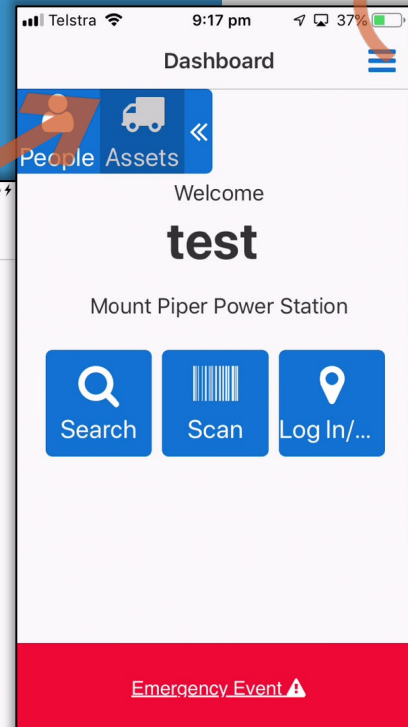
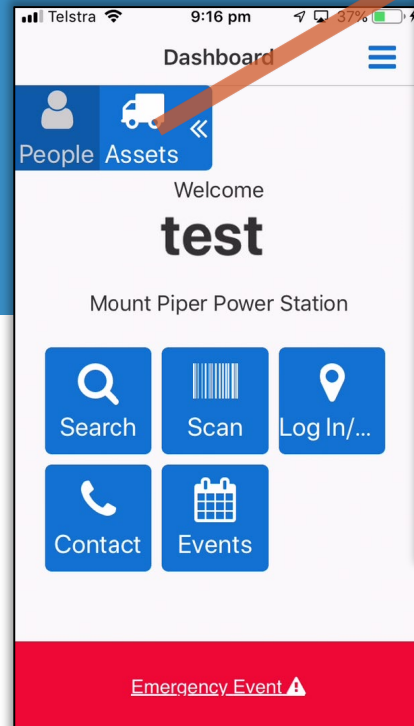
MOBILE APP

Navigating Mobile App Assets Module



Navigating

- ❖ Defaults to People Page
- ❖ Tap Assets to Switch Pages
- ❖ Tap Top-Right to Open Optional Menus
- ❖ Emergency Event Always Visible

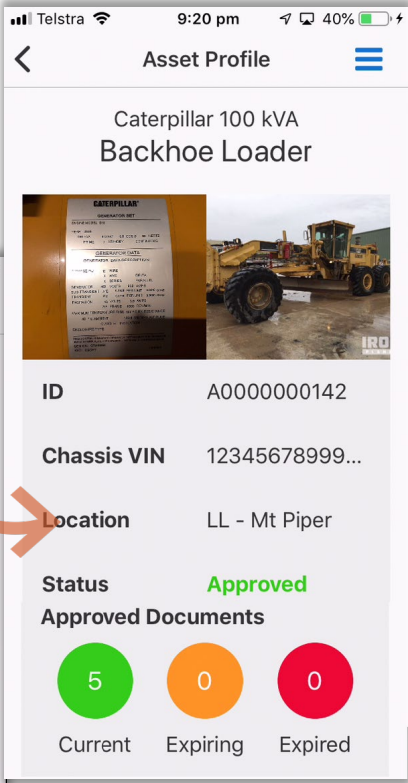
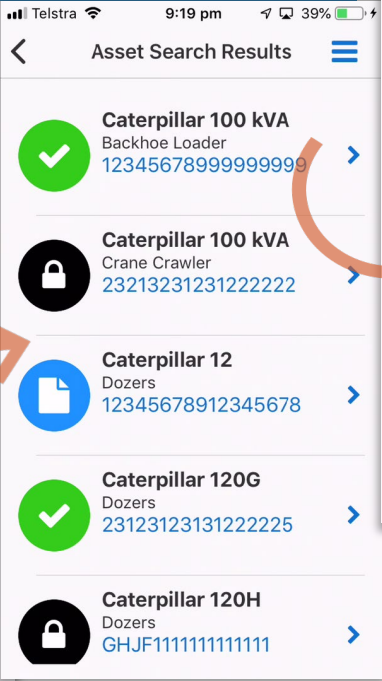
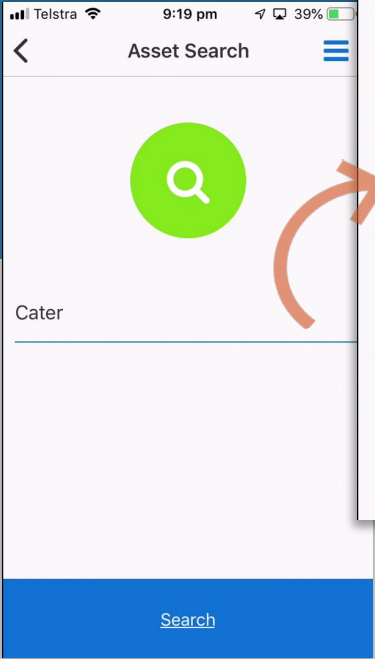


Navigating Mobile App Assets Module



Finding Assets

- ❖ Search Option on Front Page
- ❖ Search Results are shown with this status
- ❖ Tap on Asset to View More Details
- ❖ Asset Status and photos can now be checked against Asset

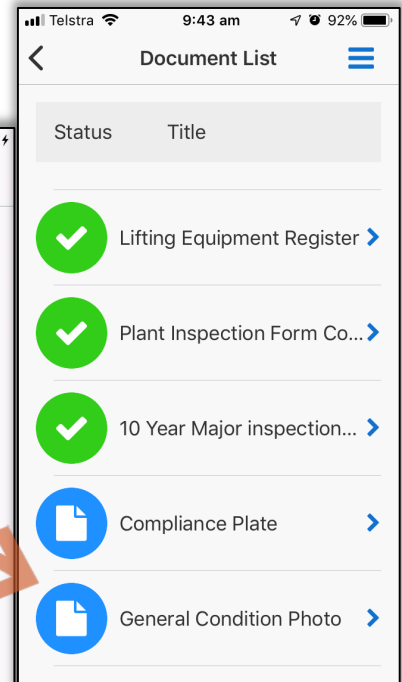
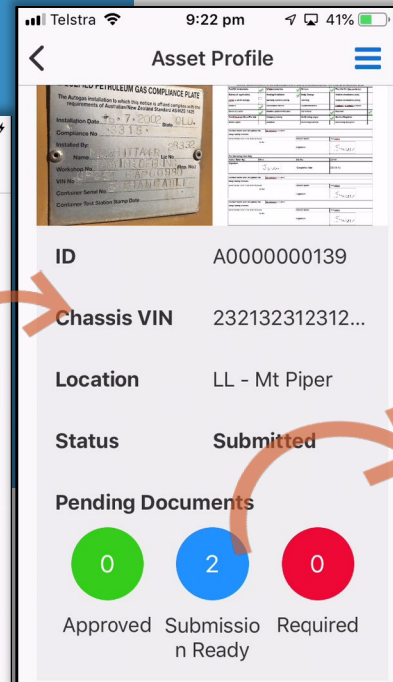
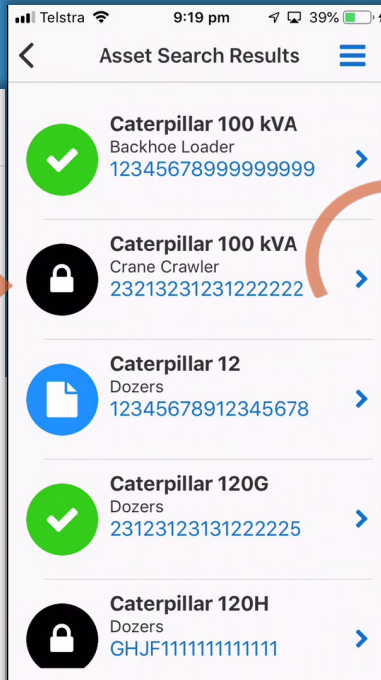
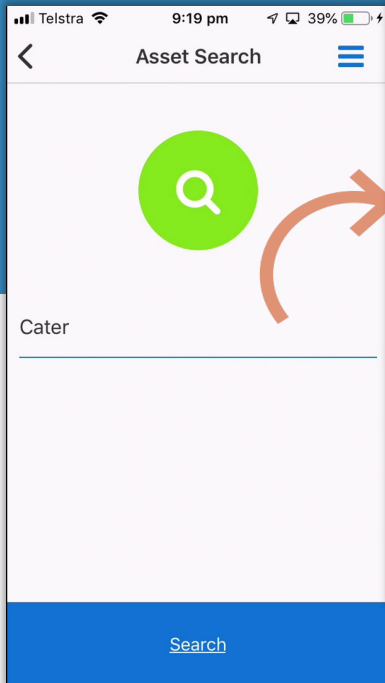


Submitted Status Screens



Padlock Icon = Submitted

- ❖ Asset Yet to be Approved by Pegasus
- ❖ Tap Padlock Icon to see Status
- ❖ Tap Blue Submission Ready to see Items Submitted

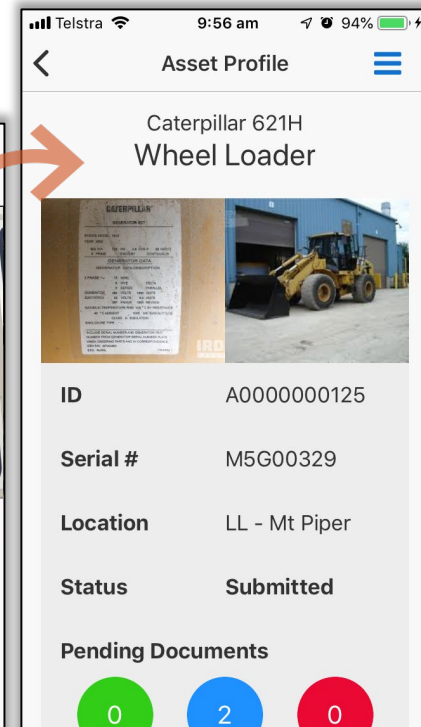
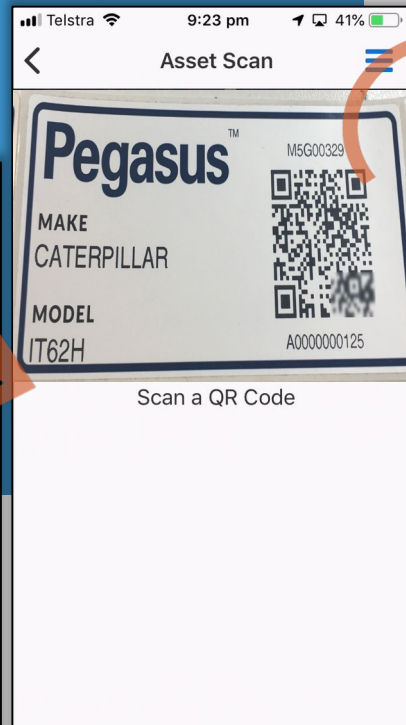
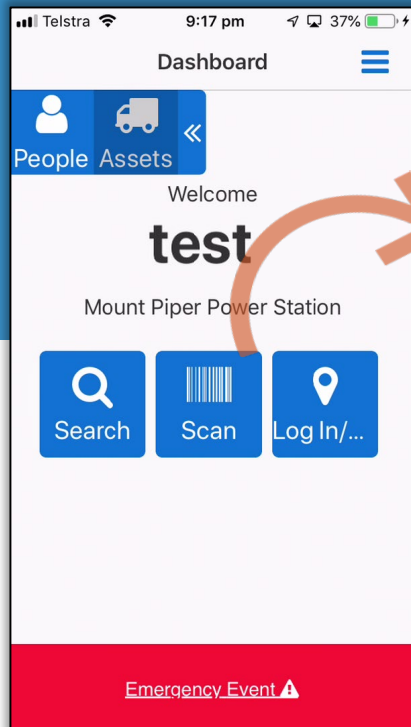


Scanning Screens



Scan QR/Barcode

- ❖ Scan Available on Home Screen or on Top-Right Menu
- ❖ Linked to Asset
- ❖ Opens up Asset Status Page

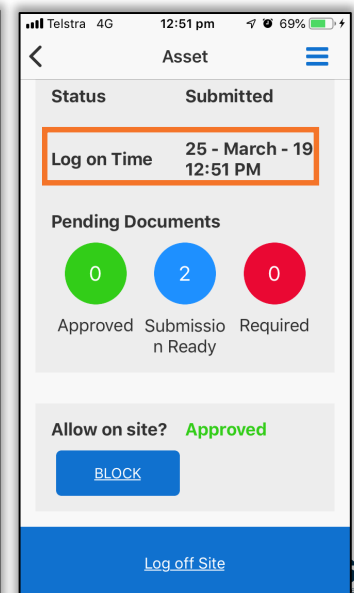
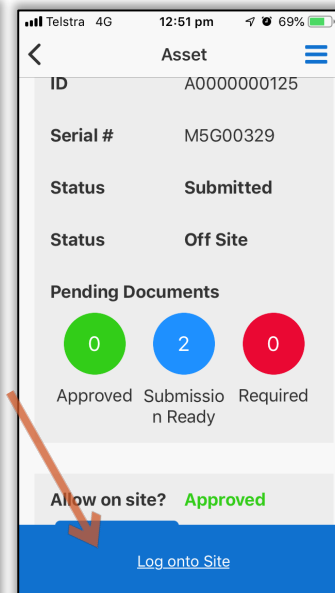
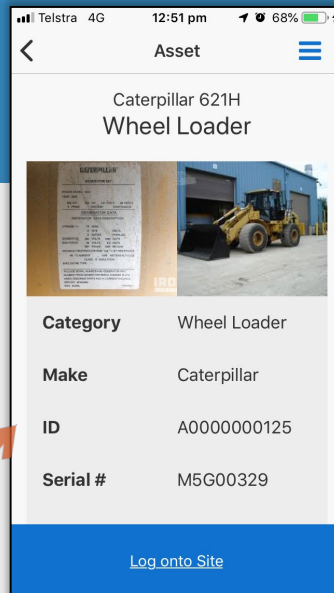
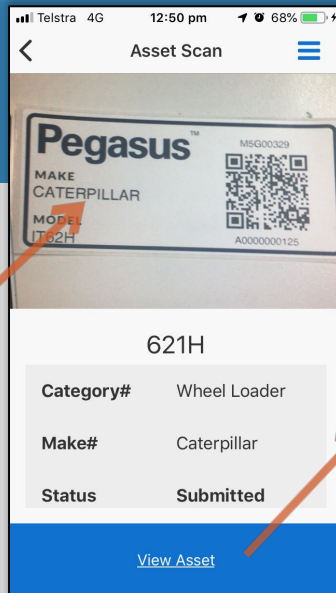
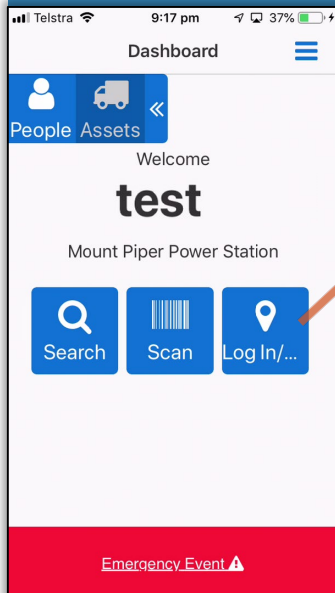


Log in / Log Out Screens



Scan QR/Barcode

- ❖ Log in/Out Available on Home Screen or on Top-Right Menu
- ❖ Scan QR code of Asset to show details
- ❖ Opens up Asset Status Page
- ❖ Scroll to bottom and Log Onto Site
- ❖ Time Stamp Shows Log in Time at Site





FOR QUESTIONS OR ASSISTANCE, PLEASE CALL

1300 131 194

OR EMAIL support@onsitetrackeasy.com.au