

**PEABODY ENERGY
SAFETY MANAGEMENT SYSTEM**

ME-SAH-MNP-0074

27/09/2022

Document Owner		Document Approver
HST Manager		Manager of Mining Engineering
Version	Approval Date	Approver Name
3	27/09/2022	Brenton Vermeulen
General Description of Changes from Previous Version		
<ol style="list-style-type: none"> 1. Original document (January 2018) 2. Added Metropolitan Org Chart and minor document reference updates 3. Periodic review, personnel involved in the review include: <ol style="list-style-type: none"> a. Mining, Mechanical and Electrical Engineering Manager b. HSEC committee member 		

Contents

- 1 Purpose**
- 2 Scope**
- 3 Requirements**
- 4 Management Structure**
 - 4.1 Arrangements for filling temporary and permanent vacancies
 - 4.2 Requirements relating to acting positions in the structure
 - 4.3 The positions within the management structure that have responsibility for the management of work health and safety at the mine or petroleum site, including mining supervisors
- 5 Contractor Acknowledgment**

1 Purpose

This document is the SMS document for the purposes of section 18 of the *Work Health and Safety (Mines and Petroleum Sites) Regulation 2022*. It includes the specific matters required to be listed by Division one.

2 Scope

This document applies to all work at Metropolitan Mine.

3 Requirements

Requirement	Document	Document Number
The health and safety policy of the operator of the mine or petroleum site, including broad aims in relation to the safe operation of the mine or petroleum site	Health Safety and Environmental Policy	ME-SAH-POL-0001
The arrangements for managing risks in accordance with section 14 WHS(MPS)R2022	Risk Management Control Plan	ME-SAH-MNP-0053
Principle Hazard Management Plans (PHMP)	Inundation or inrush of a substance PHMP	ME-MIN-HMP-0006
	Roads or other vehicle operating areas	ME-MIN-HMP-0012
	Outburst Prevention	ME-MIN-HMP-0013
	Fire and Explosion PHMP	ME-MIN-HMP-0041
	Airborne Contaminants PHMP	ME-MIN-HMP-0043
	Spontaneous Combustion	ME-MIN-HMP-0057
	Frictional Ignition	ME-MIN-HMP-0065
	Ground or Strata Failure	ME-SAH-HMP-0002
	Mine Shafts and Winding Systems	ME-TSE-HMP-0003
	Subsidence	ME-TSE-HMP-0011

Requirement	Document	Document Number
Principal control plans	Explosives PCP	ME-MIN-MNP-0009
	Inspection Program	ME-MIN-MNP-0010
	Firefighting capabilities	ME-MIN-MNP-0042
	Withdrawal Conditions	ME-MIN-MNP-0059
	Connecting Workings	ME-MIN-MNP-0071
	Sealing	ME-MIN-MNP-0076
	Emergency management system	ME-SAH-MNP-0052
	Health PCP	ME-SAH-MNP-0064
	Electrical Engineering control plan	ME-TSE-MNP-0029
	Operation of belt conveyors	ME-TSE-MNP-0035
	Mechanical Engineering CP	ME-TSE-MNP-0049
	Exhaust emissions and fuel standards	ME-TSE-MNP-0066
	Ventilation and Monitoring control plan	ME-MIN-HMP-0008
Ventilation Control Plan	Ventilation and Monitoring control plan	ME-MIN-HMP-0008
Coal Dust Explosion	Coal Dust Explosion	ME-MIN-HMP-0004
Spontaneous combustion	Spontaneous Combustion	ME-MIN-HMP-0057

Requirement	Document	Document Number
Subsidence	Subsidence	ME-TSE-HMP-0011
Sealing	Sealing	ME-MIN-MNP-0076
Light Metal Alloys	Mechanical Engineering CP	ME-TSE-MNP-0049
	Standard Mech Eng Practice - Aluminium Underground	SEP 005
Goaf areas and abandoned or sealed workings	Sealing	ME-MIN-MNP-0076
	Ventilation and Monitoring control plan	ME-MIN-HMP-0008
	Connecting Workings	ME-MIN-MNP-0071
Ventilation including minimum standards for ventilated air	Ventilation and Monitoring control plan	ME-MIN-HMP-0008
	LW Ventilation standard	ME-MIN-PRO-0985
	Development ventilation and monitoring standard	ME-MIN-PRO-1004
	Auxiliary Fan Operations	ME-MIN-PRO-0731
Control of Methane Levels	Ventilation and Monitoring control plan	ME-MIN-HMP-0008
	Roads or other vehicle operating areas	ME-MIN-HMP-0012
Gas Monitoring	Ventilation and Monitoring control plan	ME-MIN-HMP-0008
	Spontaneous Combustion	ME-MIN-HMP-0057
	Withdrawal conditions Presence of Elevated Gas	ME-MIN-TRP-0028

Requirement	Document	Document Number
	Levels (TARPS)	
	Loss of Atmospheric Monitoring TARP	ME-MIN-TRP-0039
Portable Gas Detectors	Ventilation and Monitoring control plan	ME-MIN-HMP-0008
	Portable Apparatus Electrical SEP	ME-TSE-SEP-0058
Sampling and Analysis of exhaust emissions	Exhaust emissions and fuel standards	ME-TSE-MNP-0066
Requirements if air quality safety standards not met	Ventilation and Monitoring control plan	ME-MIN-HMP-0008
	Airborne Contaminants PHMP	ME-MIN-HMP-0043
Post incident monitoring	Ventilation and Monitoring control plan	ME-MIN-HMP-0008
Use of plant and equipment in Hazardous zone (Explosion protection required) including cables and internal combustion engines	Explosive Protected Equipment SEP	ME-TSE-SEP-0051
Exceptions to explosion protected requirements	Portable Apparatus Electrical SEP	ME-TSE-SEP-0058
Persons conducting a business or undertaking at the mine or petroleum site, for consultation, co-operation and the co-ordination of activities	Information Communication Arrangements	ME-MIN-MNP-0046
Control measures that will be used to control risks to health and safety associated with the contractor's work at the mine	Contractor Management	ME-SAH-MNP-0034
	Health PCP	ME-SAH-MNP-0064

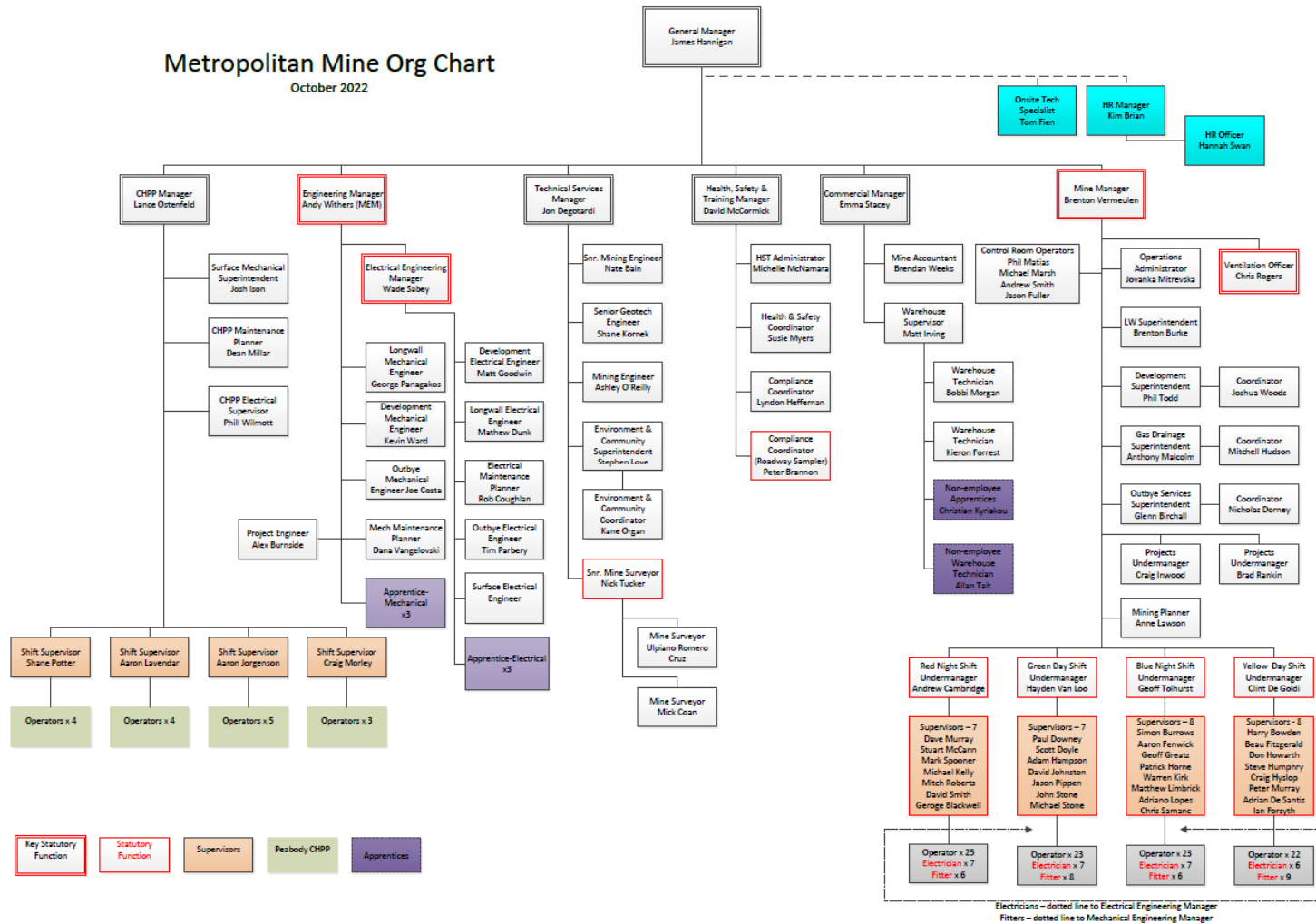
Requirement	Document	Document Number
Emergency procedures and all other matters in the emergency plan	Emergency management system	ME-SAH-MNP-0052
Procedures and conditions under which persons at the mine or petroleum site or a part of the mine or petroleum site are to be withdrawn to a place of safety	Withdrawal Conditions	ME-MIN-MNP-0059
	Withdrawal conditions Presence of Elevated Gas Levels (TARPS)	ME-MIN-TRP-0028
	Withdrawal conditions - Effects of surface fire	ME-MIN-TRP-0009
	Withdrawal conditions - Loss of surface means of egress	ME-SAH-TRP-0005
	Withdrawal conditions Failure of main ventilation system (failure of one or more surface fans)	ME-MIN-TRP-0002
	Confined Spaces	ME-TSE-HMP-0054
Arrangements for the provision of information, training and instruction	Training and Competence Management Plan	ME-TRG-MNP-0026
	Information Communication Arrangements	ME-MIN-MNP-0046
Induction procedures	Training and Competence Management Plan	ME-TRG-MNP-0026
	Medical Assessment under Coal Industries Act	Nil.
Arrangements in place for the supervision needed to protect workers and other persons at the mine or petroleum site from risks to their health and safety from work carried out at the mine	Inspection Program Principal Control Plan	ME-MIN-MNP-0010
	Training and Competence Management Plan	ME-TRG-MNP-0026

Requirement	Document	Document Number
Arrangements in place for health monitoring	Health PCP	ME-SAH-MNP-0064
	Airborne Contaminants PHMP	ME-MIN-HMP-0043
Arrangements between persons conducting a business or undertaking at the mine or petroleum site, for consultation, co-operation, the co-ordination of activities and the consultation and safety role for worker	Information Communication Arrangements	ME-MIN-MNP-0046
	Safety Management System	ME-SAH-MNP-0074
	HSSE Integration and Responsibilities	ME-SAH-PRO-0697
	Contractor Management	ME-SAH-MNP-0034
	Work health and safety committee charter	ME-SAH-FRM-0756
Procedures for notifiable incident response and investigation at the mine or petroleum site	Risk Management Control Plan	ME-SAH-MNP-0053
	Incident and Investigation Reporting Procedure	ME-SAH-PRO-0681
	Withdrawal Conditions	ME-MIN-MNP-0059
Procedures for the response to, and investigation of, incidents referred to in section 124 WHS(MPS)R2022	Incident and Investigation Reporting Procedure	ME-SAH-PRO-0681
Procedures for the review of control measures	Risk Management Control Plan	ME-SAH-MNP-0053
	Critical Controls Auditing	ME-SAH-PRO-0765
	System Evaluation	ME-SAH-MNP-0048

Requirement	Document	Document Number
Procedures for records management for the mine or petroleum site to ensure compliance with the WHS laws	Information Control Plan	MP 025
Arrangements for the effective communication of relevant information across shifts by workers, supervisors and other relevant persons and the procedures for documenting those communications	Information Communication Arrangements	ME-MIN-MNP-0046
Arrangements in place for all other monitoring and assessment and regular inspection of the working environment of the mine or petroleum site to be carried out for the purposes of the WHS laws	Inspection Program Principal Control Plan	ME-MIN-MNP-0010
	Mechanical Engineering CP	ME-TSE-MNP-0049
	Electrical Engineering control plan	ME-TSE-MNP-0029
	Ventilation and Monitoring control plan	ME-MIN-HMP-0008
	Health PCP	ME-SAH-MNP-0064
Performance standards for measuring the effectiveness of all aspects of the safety management system that are sufficiently detailed and include steps to be taken to continually improve the safety management system	HSSE Integration and Responsibilities	ME-SAH-PRO-0697
	System Evaluation	ME-SAH-MNP-0048
Resources that will be applied for the effective implementation and use of the safety management system	Metropolitan HSSE SharePoint	Nil.
	SAP EHSM	Nil.

Requirement	Document	Document Number
A system for auditing the effectiveness of the safety management system for the mine or petroleum site against the performance standards, including the methods, frequency and results of the audit process	Peabody Safety and Sustainability Audit	PE-HSE-STD-MSS

4 Management Structure



4.1 Arrangements for filling temporary and permanent vacancies

All vacancies in the management structure which last longer than seven days will be filled by individuals holding the required competencies.

For temporary vacancies, a person with the required competencies will be appointed to the role until the incumbent returns.

For permanent vacancies, a person with the required competencies will be appointed to the role temporarily until a permanent resource is appointed

4.2 Requirements relating to acting positions in the structure

Personnel in acting positions in the structure will take full responsibility for the position they are acting in. Personnel will not be appointed to those positions unless they hold the required competencies.

4.3 The positions within the management structure that have responsibility for the management of work health and safety at the mine or petroleum site, including mining supervisors

Role	Responsibility	Competencies required
General Manager	<p>Provide adequate resources for safety and health at the mine.</p> <p>Management responsibility for the provision of resources for the effective implementation of the safety management system.</p>	Competencies required within the site's training scheme.
Manager of Mining Engineering	Develop, supervise, monitor and review the mining engineering standards and procedures forming part of mining operations at the mine.	<p>Mining engineering managers practicing certificate.</p> <p>Competencies required within the site's training scheme.</p>
Mechanical Engineering Manager	<p>Develop supervise, monitor and review the mechanical engineering standards and procedures forming part of mining operations at the mine.</p> <p>Supervise the installation, commissioning, maintenance and repair of mechanical plant at the mine.</p>	<p>Mechanical engineering managers practicing certificate.</p> <p>Competencies required within the site's training scheme.</p>

Role	Responsibility	Competencies required
Electrical Engineering Manager	<p>Develop supervise, monitor and review the electrical engineering standards and procedures forming part of mining operations at the mine.</p> <p>Supervise the installation, commissioning, maintenance and repair of electrical plant at the mine.</p>	<p>Electrical engineering managers practicing certificate.</p> <p>Competencies required within the site's training scheme.</p>
Undermanager	<p>supervise the mining operations at the mine for a shift during which:</p> <p>(a) there are more than 15 persons underground; or</p> <p>(b) secondary extraction is occurring at the mine; or</p> <p>(c) major changes are being made to the ventilation system for the mine.</p>	<p>Undermanager officer practicing certificate.</p> <p>Competencies required within the site's training scheme.</p>
Ventilation officer	<p>To control and manage the ventilation activities and standards forming part of mining operations at the mine.</p>	<p>Ventilation officer practicing certificate.</p> <p>Competencies required within the site's training scheme.</p>
Deputy	<p>Supervise workers and inspect work areas in a part of the mine.</p>	<p>Deputy practicing certificate.</p> <p>Competencies required within the site's training scheme.</p>
Supervisor	<p>Supervise workers under their responsibility.</p>	<p>Competencies required within the site's training scheme.</p>
Roadway dust sampler	<p>Take roadway dust samples at the mine and ascertain the level of incombustible material in the samples.</p>	<p>Completed a course, approved by the regulator for the purposes of WHS(MPS)R2022, on the sampling and testing of roadway dust.</p> <p>Competencies required within the site's training scheme.</p>
Qualified electrical tradesperson	<p>Supervise the installation, commissioning, maintenance and repair of electrical plant and installations at the mine.</p>	<p>(a) Have a supervisor certificate that authorises the doing of electrical wiring work; or</p> <p>(b) Have a proficiency certificate, issued by Training Services NSW, in an electrical trade; or</p> <p>(c) Have been continuously employed as an electrical tradesperson at a coal mine since 21 December 2004.</p>

Role	Responsibility	Competencies required
Qualified mechanical tradesperson	Supervise the installation, commissioning, maintenance and repair of mechanical plant at the mine.	<p>(a) Have been continuously employed as a mechanical tradesperson at a coal mine since 21 December 2004; or</p> <p>(b) Have the required skills and experience identified in the mechanical engineering control plan and a proficiency certificate, issued by Training Services NSW, as identified in the mechanical engineering control plan.</p>
Worker	<p>While at work, a worker must:</p> <p>(a) Take reasonable care for his or her own health and safety; and</p> <p>(b) Take reasonable care that his or her acts or omissions do not adversely affect the health and safety of other persons; and</p> <p>(c) Comply, so far as the worker is reasonably able, with any reasonable instruction that is given by the person conducting the business or undertaking to allow the person to comply with WHS laws; and</p> <p>(d) Co-operate with any reasonable policy or procedure of the person conducting the business or undertaking relating to health or safety at the workplace that has been notified to workers.</p>	Competencies required within the site's training scheme.

Note: A person is a worker if the person carries out work in any capacity including work as:

- (a) an employee; or
- (b) a contractor or subcontractor; or
- (c) an employee of a contractor or subcontractor; or
- (d) an employee of a labour hire company who has been assigned to work in the person's business or undertaking; or
- (e) an outworker; or
- (f) an apprentice or trainee; or
- (g) a student gaining work experience; or
- (h) a volunteer.

5 Contractor Acknowledgment

TO BE ON CONTRACT COMPANIES COMPANY LETTERHEAD

Attn. (Peabody Metropolitan mine Representative Name)

(Role)

Peabody

Metropolitan Mine

DD/MM/YYYY

Dear (Peabody Metropolitan Representative Name),

Re: Contractor company acknowledgement – **Contractor Company Name**

To fulfill our obligations under WHS laws, **Contractor Company Name** hereby provide formal, written notification that **Contractor Company Name** employees and subcontractors will adhere to the site Health and Safety Management System whilst working at Peabody, Metropolitan Mine.

Contractor Company Name has:

1. Conducted a review Safety Management System ME-SAH-MNP-0074; and
2. The contractor reasonably believes the safety management system is consistent with the contractor's arrangements to manage the risks to health and safety from mining operations carried out by the contractor at the mine site in accordance with section 14 WHS(MPS)R2022 and other requirements under the WHS laws that relate to the operations.

Yours Sincerely,

Signature

Name

Contractor Role

Contractor Company Name

Phone Number