

SKILL NAME:	Rio Tinto Yarwun Compress Gas-Oxy Cutting CTO		
COURSE ID:	30413966	QUAL ID	30413954 (2 years)
EMPLOYEE TO COMPLETE			
Name:			
SAP / Browz ID:			
Department:			
Contractor:	Yes	No	Company:

Employee

Signature: _____

Date: _____

Assessor must select either RCC or Full assessment

<input type="checkbox"/> - RCC Assessment			
Recognition of Current Competence Questions Complete: <i>(RCC Self-Assessment, Section 1.0)</i>	<input type="checkbox"/> C	<input type="checkbox"/> NYC	
Observation Checklist Critical Aspects Verified: <i>(Observation Checklist, Section 2.0)</i>	<input type="checkbox"/> C	<input type="checkbox"/> NYC	
Important: When RCC is completed the Assessor/Leader is required to verify with a signature/initial, on each line, that the Candidate is competent in the shaded critical aspects found in the Observation Checklist indicated by a *.			
<input type="checkbox"/> - Full or First time CTO Assessment			
Observation Checklist Completed: <i>(Observation Checklist, Section 2.0)</i>	<input type="checkbox"/> C	<input type="checkbox"/> NYC	
What If Analysis Completed: <i>(What If Analysis Questionnaire, Section 3.0)</i>	<input type="checkbox"/> C	<input type="checkbox"/> NYC	
Important: For full assessment, all components in the relevant sections must be marked as either S or NYS			
AUTHORISED ASSESSOR TO COMPLETE			
Assessment Completed By: <i>(Holds TAE)</i>	Name:	Sign:	Date:
Assessor Position:	RTA Yarwun Employee: <input type="checkbox"/>	Contractor: <input type="checkbox"/>	
Content Expert: <i>(if required)</i>	Name:	Sign:	Date:
Result:	<input type="checkbox"/> Authorised to Operate	<input type="checkbox"/> Not Authorised to Operate	
Assessment completed at: <i>Specify RTO (if applicable):</i>	<input type="checkbox"/> Yarwun Refinery	<input type="checkbox"/> External RTO	
Comments:			

**Completed document must be supplied to Employer for upload to BROWZ if Contractor
Forward to Learning & Development team for Yarwun Employees**

LEARNING & DEVELOPMENT TO COMPLETE			
Administrator Signature:		Date:	

Documentum File Name:	HRT-FRM-0404.00 - Oxy Acetylene Gas cutting CTO.doc	Effective Date:	14/01/2020
Document Type:	Assessment	Printed Date:	22/08/2023 10:54:00
Status:	Approved	Page:	Page 1 of 8
Approved By:	BJ Moore		

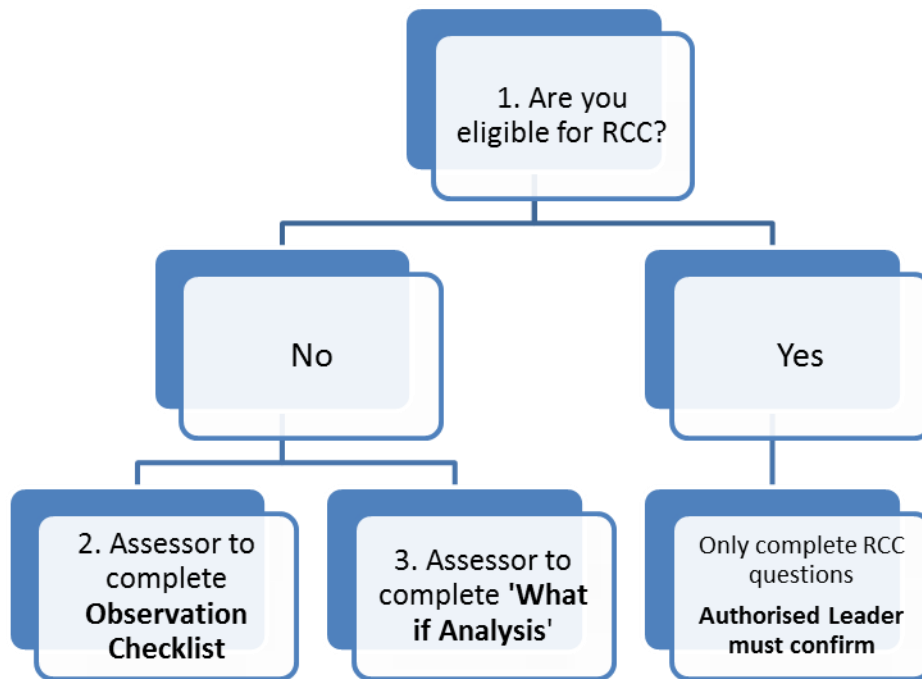
Assessment Tool Overview:

This Assessment Tool is a collection of assessment instruments designed to help you demonstrate your competence against the Performance Standard: [HRT-TRG-0382.00-Rio Tinto Yarwun Oxy/Acetylene Gas cutting](#) & SAF-WSD-0014.00 - Hot Work

Rio Tinto Yarwun Oxy/Acetylene Gas cutting CTO

This Assessment Tool provides you with a number of different instruments to assist in the evidence gathering process. Instruments used in this Assessment Tool include:

1. Recognition of Current Competence (RCC) - *applicable for recertification only*
2. Observation Checklist
3. What If Analysis



Note: Authorised Assesor or Leader must verify Critical Aspects in the observation Checklist

Assessment Appeal:

You may appeal against an unsatisfactory assessment result if you believe that reasonable grounds for reconsideration exist e.g.: inequitable assessment in comparison to other Learners, faulty administration or Assessor misconduct.

Refer: [HRT-GDL-0351.00-RT Yarwun TSOP 5.3.8 Assessment Appeal](#).

Documentum File Name:	HRT-FRM-0404.00 - Oxy Acetylene Gas cutting CTO.doc		
Document Type:	Assessment	Effective Date:	14/01/2020
Status:	Approved	Printed Date:	22/08/2023 10:54:00
Approved By:	BJ Moore	Page:	Page 2 of 8

Recognition of Current Competence (RCC)

1.1.1 Definition:

RCC may apply if a Candidate has previously and successfully completed the requirements for this Site Authorisation and is now required to be reassessed to ensure that competence has been maintained.

Steps required for RCC:

Step 1: Candidate completes questions based on relevant underpinning knowledge relevant to the Performance Standard to ensure you can recall essential information for safe and efficient performance.

Step 2: If RCC is accepted, the Assessor and Authorised Leader will sign the 'ASSESSMENT SUMMARY AND CERTIFICATION' record at the start of this document. If RCC is rejected, complete the full assessment process.

Step 3: Assessor or Leader must sign the front page to confirm critical aspects * as detailed within Observation Checklist (*Practical demonstration*)

1.1.2 Self-Assessment:

Please answer the questions below and provide comments where appropriate.

Have you performed Oxy/Acetylene cutting on the Rio Tinto Yarwun site since your initial assessment? If so, how many times?

<i>Comment:</i>

Have you been involved in any incidents involving Oxy/Acetylene on the Rio Tinto Yarwun site?

<i>Comment:</i>

Describe the leak testing process used to confirm all gas hoses, cylinders and associated equipment are serviceable

<i>Comment:</i>

Documentum File Name:	HRT-FRM-0404.00 - Oxy Acetylene Gas cutting CTO.doc	Effective Date:	14/01/2020
Document Type:	Assessment	Printed Date:	22/08/2023 10:54:00
Status:	Approved	Page:	Page 3 of 8
Approved By:	BJ Moore		

When carrying out a pressure test how long do you check for pressure drop for after the main cylinder valves have been turned off?

Comment:

What is the maximum safe working pressure for acetylene?

Comment:

Explain the shutdown procedure when shutting down oxy/acetylene cutting equipment.

Comment:

Reserved – at Assessor discretion

Comment:

Reserved – at Assessor discretion

Comment:

1.1.3 Instructions for Assessor:

If RCC is accepted, please complete the '**ASSESSMENT SUMMARY AND CERTIFICATION**' record at the start of this document.

If RCC is rejected, please complete the full assessment process.

Documentum File Name:	HRT-FRM-0404.00 - Oxy Acetylene Gas cutting CTO.doc		
Document Type:	Assessment	Effective Date:	14/01/2020
Status:	Approved	Printed Date:	22/08/2023 10:54:00
Approved By:	BJ Moore	Page:	Page 4 of 8

1.1.4 Observation Checklist: Rio Tinto Yarwun Oxy/Acetylene Gas cutting CTO

The Assessor will record their observations of your Practical Assessment in relation to the Performance Standard. Assessor to verify critical aspects (*) when using RCC by signing or initialling in each line.

1. Prepare for work		S	NY S
1.1.	*Complete a Pre-Task Hazard Assessment and instigate all control measures.		
1.2.	Identify, obtain and use appropriate PPE for prestart task.		
1.3.	Work instructions are used to determine job requirements, including job sheets, quality and quantity of materials.		
1.4.	Work health and safety (WHS), Site Safety Standards and environmental requirements associated with cutting with oxy-acetylene are adhered to throughout the work.		
1.5.	Tasks are planned and sequenced in conjunction with others involved in or affected by the work.		
1.6.	Tools and equipment, including personal protective equipment (PPE), are selected and checked for serviceability.		
1.7.	*Perform inspection of all emergency equipment for serviceability.		
1.8.	Faults are identified and/or diagnosed and appropriate action is taken to remedy or report them as required by RTA Yarwun Site Standards.		

2. Assemble and leak test equipment:		S	NY S
2.1.	*Accessories and equipment are correctly selected and assembled for the task according to manufacturer and RTA Yarwun site standard guidelines.		
2.2.	Tip size is selected as appropriate for the materials to be cut.		
2.3.	*Cutting pressures are set to manufacturer recommendations for the materials to be cut.		
2.4.	*Leak testing checks are carried out on all hoses and equipment for security and leaks.		
2.5.	Faults are identified and/or diagnosed and appropriate action is taken to remedy or report them as required by RTA Yarwun Site Standards.		

Documentum File Name:	HRT-FRM-0404.00 - Oxy Acetylene Gas cutting CTO.doc		
Document Type:	Assessment	Effective Date:	14/01/2020
Status:	Approved	Printed Date:	22/08/2023 10:54:00
Approved By:	BJ Moore	Page:	Page 5 of 8

3. Operate thermal cutting equipment:		S	NY S
3.1.	Cutting process and/or procedure appropriate for material is selected.		
3.2.	*All safety procedures/precautions are observed in compliance with the job specification and RTA Yarwun site standards.		
3.3.	*Equipment start-up procedures are followed correctly to manufacturer and RTA Yarwun site standards.		
3.4.	Material is securely fixed, using appropriate fixing methods, to prevent movement during the cutting operation.		
3.5.	Flame is set and adjustments made correctly according to manufacturer specifications.		
3.6.	Cuts are performed according to the specified cutting procedures to produce a clean cut.		
3.7.	Appropriate cutting allowances are made.		
3.8.	Material is used in the most economical way.		
3.9.	Material is cut to specification; shape/size/length is to accepted workplace standards.		

4. Shutdown and packup		S	NY S
4.1.	Equipment is shutdown in accordance with manufacture recommendations.		
4.2.	*Equipment is cleaned and inspected for serviceable conditions in accordance RTA Yarwun site standards.		
4.3.	*Unserviceable equipment is either repaired or tagged and faults identified in accordance with RTA Yarwun site standards.		
4.4.	Material that can be re-used is collected and stored in accordance with RTA Yarwun site standards.		
4.5.	Waste and scrap is removed in accordance with RTA Yarwun site standards.		
4.6.	Work area is cleaned in accordance with RTA Yarwun site standards.		

Documentum File Name:	HRT-FRM-0404.00 - Oxy Acetylene Gas cutting CTO.doc		
Document Type:	Assessment	Effective Date:	14/01/2020
Status:	Approved	Printed Date:	22/08/2023 10:54:00
Approved By:	BJ Moore	Page:	Page 6 of 8

Feedback to Candidate:

Documentum File Name:	HRT-FRM-0404.00 - Oxy Acetylene Gas cutting CTO.doc		
Document Type:	Assessment	Effective Date:	14/01/2020
Status:	Approved	Printed Date:	22/08/2023 10:54:00
Approved By:	BJ Moore	Page:	Page 7 of 8

1.1.5 What If Analysis:

Interview Guidelines:

Your Assessor will talk with you about your assessment. This is important to measure your:

1. task skills
2. task management skills
3. contingency management skills
4. job role/environment skills

The areas your Assessor will talk with you about include the discussion points listed below. The Assessor will also ask questions specifically related to the safety and risk management issues associated with each topic. Please feel free to add any discussion points that you would like to revisit in the available fields below.

Issues for Discussion.

S NYS

General safety considerations associated with Gas cutting operations		
Possible risks involved with gas cutting operations: <ul style="list-style-type: none"> • interaction with work groups or fixed plant • environmental conditions • night operations • equipment damage 		
The identification and management of risks		
Site procedure for reporting safety incidents		
Alarms, emergency procedures, protocols and reporting		
<i>Reserved – at Assessor discretion</i>		
<i>Reserved – at Assessor discretion</i>		
<i>Reserved – at Assessor discretion</i>		
<i>Reserved – at Assessor discretion</i>		
<i>Reserved – at Assessor discretion</i>		

Documentum File Name:	HRT-FRM-0404.00 - Oxy Acetylene Gas cutting CTO.doc		
Document Type:	Assessment	Effective Date:	14/01/2020
Status:	Approved	Printed Date:	22/08/2023 10:54:00
Approved By:	BJ Moore	Page:	Page 8 of 8